


# Housing & Health in Woodinville

The relationship between health and home is well-studied and widely-recognized: the health of our bodies depends on the health of our homes

## Healthy housing is affordable, safe, and supportive

A healthy home is one where the physical, mental, and socioeconomic environment supports the well-being of household members. It is free from hazards like pests or structural deficiencies. It does not impose a cost burden, ensuring household income can be spent on other needs such as food and healthcare.

It should be possible for every Woodinville resident to live in a healthy home.



**Affordable**

Less than 30% of household income is spent on housing, ensuring there is enough for healthy food, health care, and other needs



**Safe**

Home is free from hazards such as toxins, pests, and structural problems



**Supportive**

Household members are supported in making healthy choices, achieving educational and economic success, and engaging with their community



## Healthy housing is critical to well-being

Research shows that affordable, healthy homes are positively correlated to physical and psychological well being.



Poor housing quality is the most consistent and strongest predictor of emotional and behavioral problems in children and youth

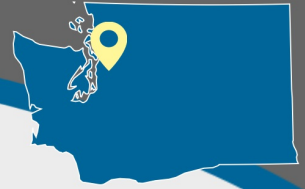


Households who spend less on housing are less likely to experience residential instability, which is associated with reduced mental and physical health outcomes



Residential exposures are major contributing factors to serious illnesses

# Impacts of healthy housing barriers in Woodinville



HUD's defined housing problems include overcrowding, inadequate plumbing, inadequate kitchen facilities, and cost-burden. The National Healthy Housing Standard (NHHS) builds on these to include structural integrity, safety & security, heating & energy, moisture, waste, pest management and chemical agents.



Injuries at home account for 4 million emergency department visits and 70,000 hospital admissions nationwide

Nearly

**3 in 10**



households in Woodinville are cost burdened

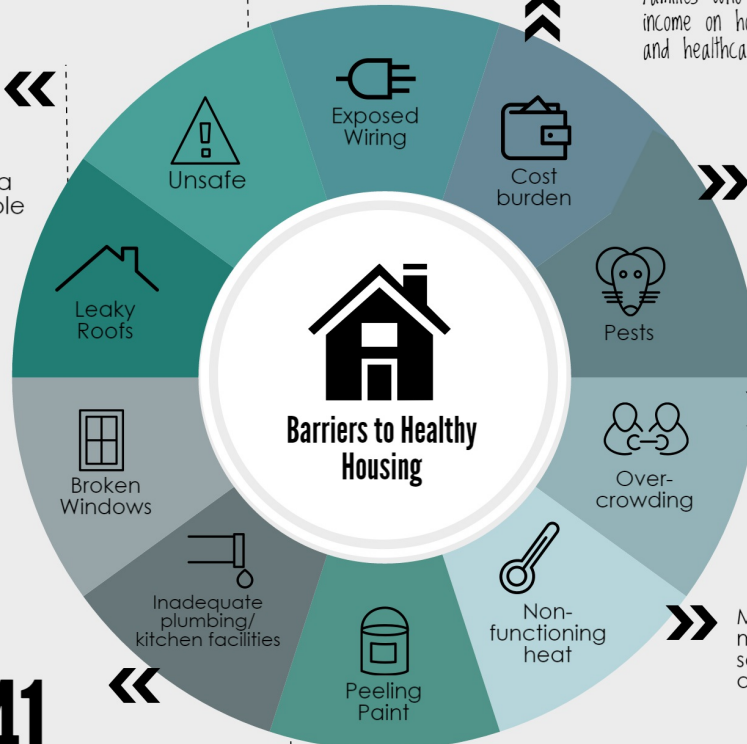
Families who spend less of their income on housing spend more on food and healthcare.

Leaky, saggy roofs & broken windows cause mold, increasing the risk for asthma and other serious health problems

40% of childhood asthma cases are attributable to residential exposures

**\$2,584**  
Annual expenses for asthma related treatments per household

**4.3 million**  
Days of lost productivity due to asthma in Washington adults (that's 11,781 years!)



The presence of pests can increase the risk of hospitalization by up to: **3x**



Woodinville households are over-crowded

Over-crowding is linked to higher rates of infectious disease transmission

Malfunctioning or poorly maintained HVAC systems pose safety and health risks including fire and exposure to carbon monoxide

**41**  
Woodinville households have inadequate kitchen or plumbing facilities

**25%** of Woodinville households have a risk of lead exposure

Lead at any level has toxic effects on the nervous system and cognitive development, especially in children.

**\$5,600**  
1 year of medical & special education for a seriously lead-poisoned child

Updated March 2017.

American Public Health Association & National Center for Healthy Housing. "National Healthy Housing Standard." 16 May 2014.  
Coley, Rebekah Levine, Tama Leventhal, Alicia Doyle Lynch, and Melissa Kull. "Poor Housing Quality is Tied to Children's Emotional and Behavioral Problems." MacArthur Foundation. "How Housing Matters." September 2013. Web.  
"Lead Free Kids: National Lead Poisoning Prevention Week 2015." Web blog post. "Your Health- Your Environment." Centers for Disease Control and Prevention. 26 Oct 2015.  
King County Housing Repair Program. "Area Summary of HRP Activity." 2015. Web.  
National Center for Healthy Housing. "Washington Healthy Housing Fact Sheet." 2015. Web.  
United States Census Bureau / American Factfinder. 2014 American Community Survey. U.S. Census Bureau's American Community Survey Office. 2014. Web.  
United States Department of Housing and Urban Development. Office of Policy Development and Research. Comprehensive Housing Affordability Strategy (CHAS). Web.  
Verrenti, Catherine, and Mitchell Hannoosh. Getting to Healthy Housing in South King County. Rep. Seattle: Housing Development Consortium of Seattle-King County, 2016. Web.

For more infographics like this one, visit [housingconsortium.org](http://housingconsortium.org)

